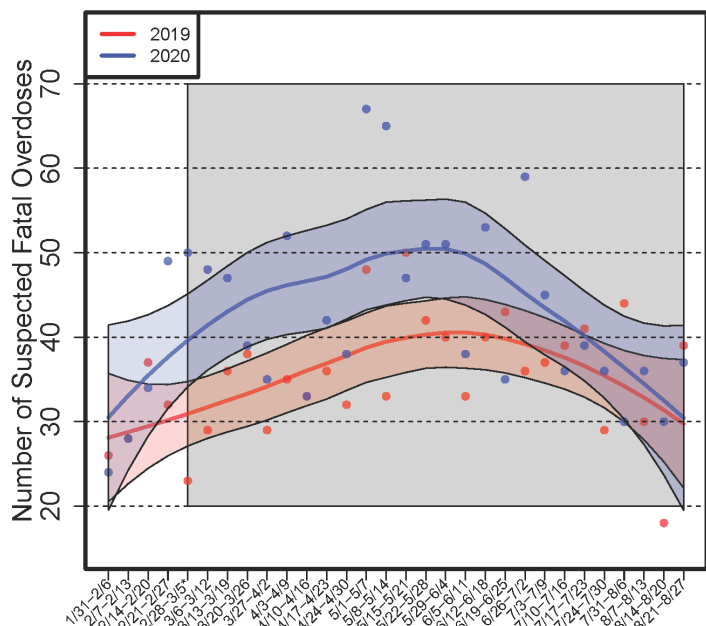


CHANGE IN MICHIGAN OVERDOSES DURING THE COVID-19 PANDEMIC

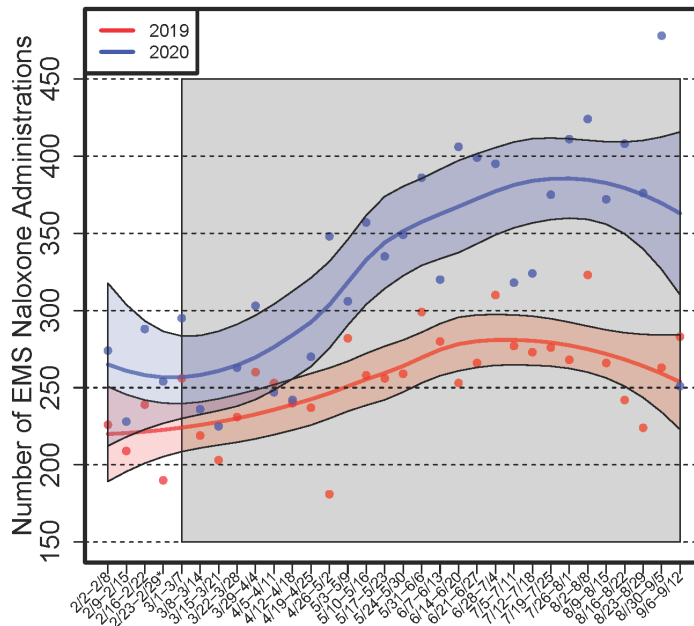
- From counties with available data (Fig. 3), suspected fatal overdoses from 3/1/20-9/16/20 were 15.0% higher than the same period in 2019
- Statewide EMS naloxone administrations from 3/1/20-9/16/20 were 28.8% higher than the same period in 2019
- Changes from 2019 to 2020 in both data sources varied across both time (Figures 1, 2) and space (Figures 3, 4)

FIGURE 1. SUSPECTED FATAL OVERDOSES BY WEEK IN 2019 VS. 2020



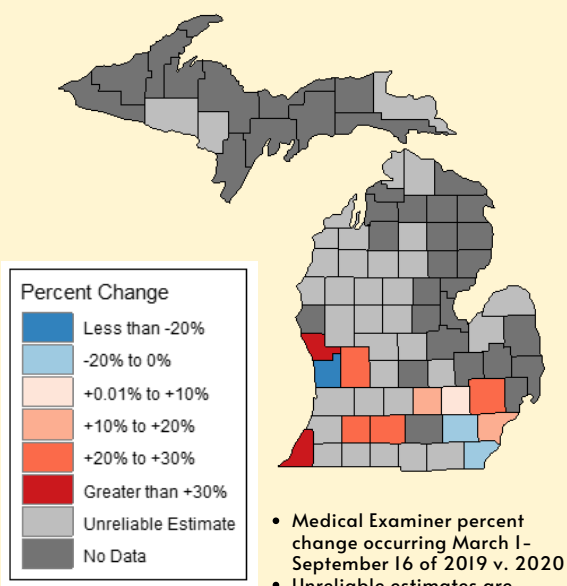
Counts of suspected fatal overdoses from counties with available data, by week, with the smoothed trajectory (line) and pointwise 95% confidence interval (shaded region) superimposed
 *: Date range excludes 2/29 in 2019

FIGURE 2. STATEWIDE EMS NALOXONE ADMINISTRATIONS BY WEEK IN 2019 VS. 2020



Counts of statewide EMS naloxone administrations, by week, with the smoothed trajectory (line) and pointwise 95% confidence interval (shaded region) superimposed
 *: Date range excludes 2/29 in 2019

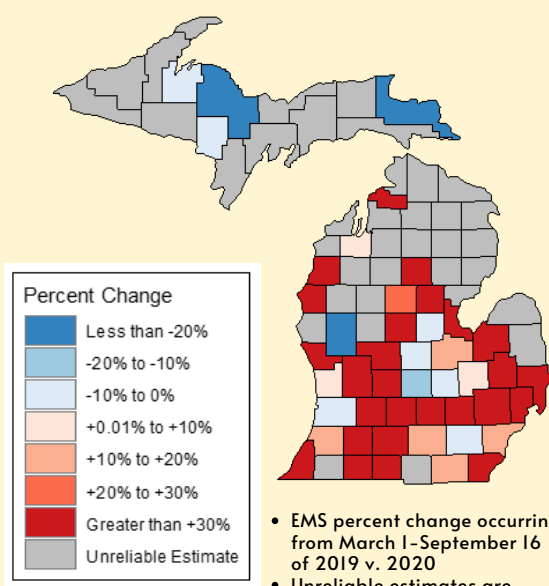
FIGURE 3. PERCENT CHANGE IN SUSPECTED FATAL OVERDOSE



- Medical Examiner percent change occurring March 1-September 16 of 2019 v. 2020
- Unreliable estimates are those based on counts <10 in 2019 and/or 2020

Note: Date range for Oakland County ME is March 1- August 31

FIGURE 4. PERCENT CHANGE IN EMS NALOXONE ADMINISTRATION



- EMS percent change occurring from March 1-September 16 of 2019 v. 2020
- Unreliable estimates are those based on counts <10 in 2019 and/or 2020
- Cases reported to SOS as of 9/17/2020

TABLE 1. EMS naloxone administrations and suspected fatal overdose incidents in select cities in 2019 vs. 2020

Suspected Fatal Overdoses			
City	March 1- September 16		% change
	2019	2020	
Detroit	254	294	15.75%
Grand Rapids	21	22	4.76%
Lansing	51	61	19.61%
Ann Arbor	22	21	-4.55%
Dearborn	23	21	-8.70%
Kalamazoo	34	43	26.47%
Muskegon	19	30	57.89%

EMS Naloxone Administrations			
City	March 1- September 16		% change
	2019	2020	
Detroit	1554	1566	0.77%
Grand Rapids	265	409	54.34%
Lansing	221	354	60.18%
Ann Arbor	64	70	9.38%
Flint	415	438	5.54%
Dearborn	120	106	-11.67%
Kalamazoo	170	209	22.94%
Pontiac	156	212	35.90%
Muskegon	117	213	82.05%